

QY50K FULL HYDRAULIC TRUCK CRANE

- ◆ Adoption of several China state patents and technical know-how.
- ◆ 5-section telescopic boom of oval profile and 2-section folding jib, larger working range.
- ◆ Full-width driver's cab and newly-designed operator's cab with wide field of vision, convenient for operation.
- ◆ Swing system with free-sliding function can automatically align to load. Pinion offset makes meshing clearance easy to adjust.
- ◆ New structure and imported steel material are used to minimize the total weight and maximize the whole vehicle performances. Main performances are in the leading position in the industry.
- ◆ Main hydraulic components used are international most advanced ones, the whole machine performance improved greatly.
- ◆ Well-equipped safety devices such as automatic load moment limiter, hoist limit switch, wire rope over-release cut-out device, make operation more safe.
- ◆ Environmental and powerful engine is equipped with the crane, strong drive and good passing-ability.

XUZHOU CONSTRUCTION MACHINERY GROUP IMP.&EXP.CO.,LTD

Add:XCMG Headquarters,Xuzhou Economic Development Zone,Jiangsu,China 221004

Tel: **European & American Dept.**+86-516-87739238

Asian Dept.+86-516-87739234

American & Oceania Dept.+86-516-87739237

Fax:+86-516-87739230

E-mail:sinomac@public.xz.js.cn

www.xcmg.com

Please contact with our district agent:

Materials and specifications are subject to change without notice.



QY50K

HYDRAULIC TRUCK CRANE

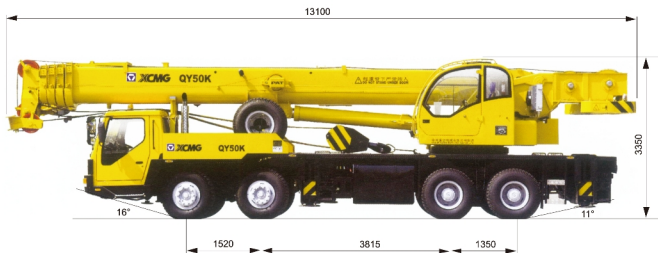


Max.Total Rated Lifting Load	50t
Full-extend boom Lifting Height	40m
Full-extend boom Jib Lifting Height	97kW/2500pm

QY50K

FULL HYDRAULIC TRUCK CRANE

Dimensions



Power

Engine model	WD615.46	ISLE+350
Engine rated output	289/2200	257/2100
Engine rated torque	1480/1400	1550/1400
max. rated speed	2200	2100

Weight

Dead weight in travel state	38580kg	39400kg
Axle load		
Front axle	12950kg	13420kg
Rear axle	25630kg	25980kg

Dimensions

Overall length	13100mm	13100mm
Overall width	2750mm	2750mm
Overall height	3350mm	3450mm

Travel

Travel speed		
Max.travel speed	75km/h	75km/h
Min.travel speed	4.3km/h	4.3km/h
Turning diameter		
Min.turning diameter	24m	24m
Min.turning diameter at boom tip	26.5m	26.8m
Min.ground clearance	285mm	285mm
Approach angle	16°	16°
Departure angle	11°	11°
Max.gradeability	46%	46%
Fuel consumption of 100km	~46L	~46L

Lifting performance

Max total rated lifting load	50t
Min rated working radius	3m
Turning radius at swing table tail	3482mm
Max load moment	
Base boom	1764kN.m
Full-extend boom	823.2kN.m
Outrigger extension distance	
Longitudinal	5.65m
Lateral	6.8m
Lifting height	
Base boom	10.75m
Full-extend boom	40m
Full-extend boom+Jib	55.8m
Jib offset	0° 15° 30°

Working speed

Boom elevating time	
Boom raising	88s
Boom telescoping time	
Full-extending	180s
Max.slewing speed	2r/min
Hoisting speed (single rope 4h layer)	
Main winch with full load	85m/min
Main winch with no load	110m/min
Auxiliary winch with full load	85m/min
Auxiliary winch with no load	110m/min

Total rated lifting load for boom (Table 1)

Working radius (m)	Boom Length				
	Base boom 10.70m	Mid-extend boom 18.05m	Mid-extend boom 25.40m	Mid-extend boom 32.75m	Full-extend boom 40.10m
3	50000				
3.5	50000	31000			
4	42500	29000			
4.5	39500	28000	20000		
5	36000	27000	19000		
5.5	30300	24500	18500		
6	25600	23000	18200	13600	
7	19100	18900	17000	13600	
8	15200	14800	15500	12500	8200
9	12100	11800	12800	11500	8200
10		9500	10600	10500	7600
12		6800	7700	8200	6800
14		4800	5800	6200	6000
16		3400	4400	4800	5000
18			3300	3800	4000
20			2500	3000	3200
22			1800	2300	2800
24				1800	2100
26					1600
28					1200
30					900
Parts of line	12	8	5	4	3
Min.boom angle	16.36°	17.02°	24.11°	34.21°	39.28°
Max.boom angle	68.95°	76.16°	77.93°	77.99°	77.30°
weight of tool box	515kg				

Total rated lifting load for jib (Table 2)

Boom angle (°)	Boom 40.1m					
	0°		15°		30°	
	Jib 8.5m Lifting Load(t)	Jib 15m Lifting Load(t)	Jib 8.5m Lifting Load(t)	Jib 15m Lifting Load(t)	Jib 8.5m Lifting Load(t)	Jib 15m Lifting Load(t)
75	4000	2000	2700	1400	2440	1100
78	3600	2000	2500	1200	2300	1000
72	3200	1800	2300	1150	2200	950
70	2900	1700	2200	1100	2100	900
65	2300	1400	1900	950	1900	880
60	1800	1200	1600	800	1500	830
55	1000	800	900	700	850	600
50	450		400		350	

Notes on Table 1 and Table 2:

The data in the table are the max.lifting capacity when the crane is set up on level and firm ground.

The total rated lifting load in the table includes the weight of hook block and slings.

The working radius in the table one is the actual value including boom deflection under loads.

Wind pressure 125N/m².Lifting operation is also allowed under the condition of wind force scale7.

The lifting height in table 1 is only for reference.

